

## Service Document **Exchange Set**

### **CDP 5100 SPCD**

#### **Service Manual**

Sicherheit  
Safety

Materialnr./Part No.  
720108000001



Es gelten die Vorschriften und Sicherheitshinweise gemäß dem Service Manual „Sicherheit“, Materialnummer 720108000001, sowie zusätzlich die eventuell abweichenden, landesspezifischen Vorschriften!



The regulations and safety instructions shall be valid as provided by the „Safety“ Service Manual, part number 720108000001, as well as the respective national deviations.

Dieses Service Dokument ist nur in Datenform verfügbar

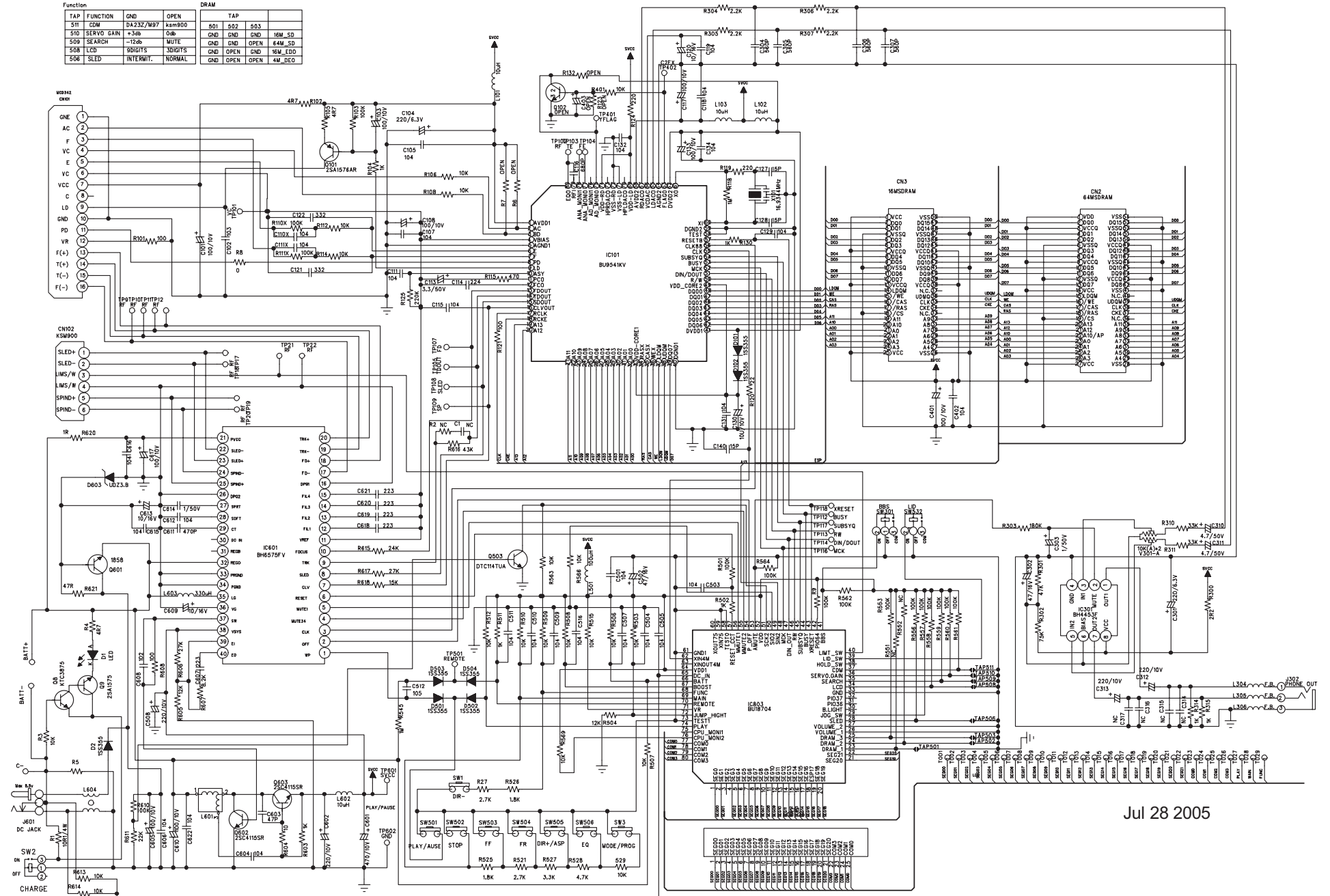
This Service Document is only available as data

Änderungen vorbehalten/Subject to alteration

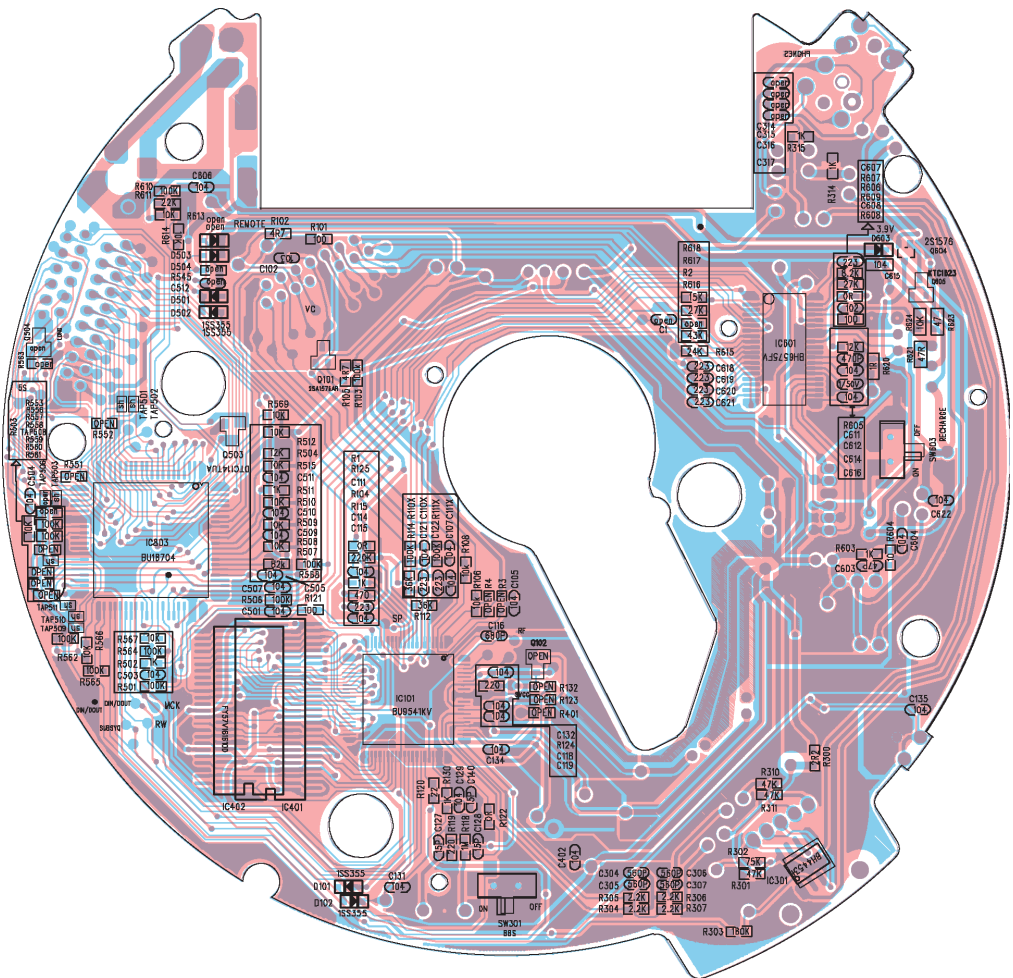
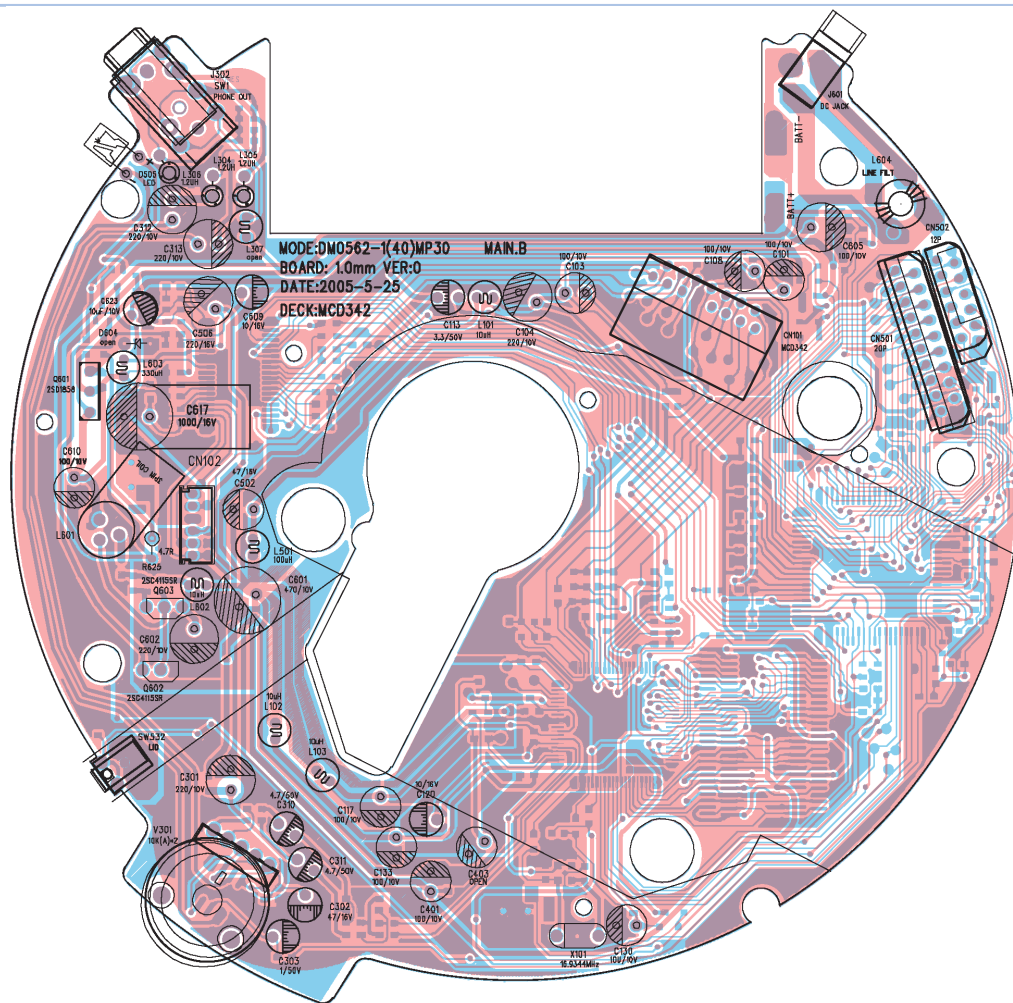
Made by GRUNDIG in Germany • TCC 0206 HH

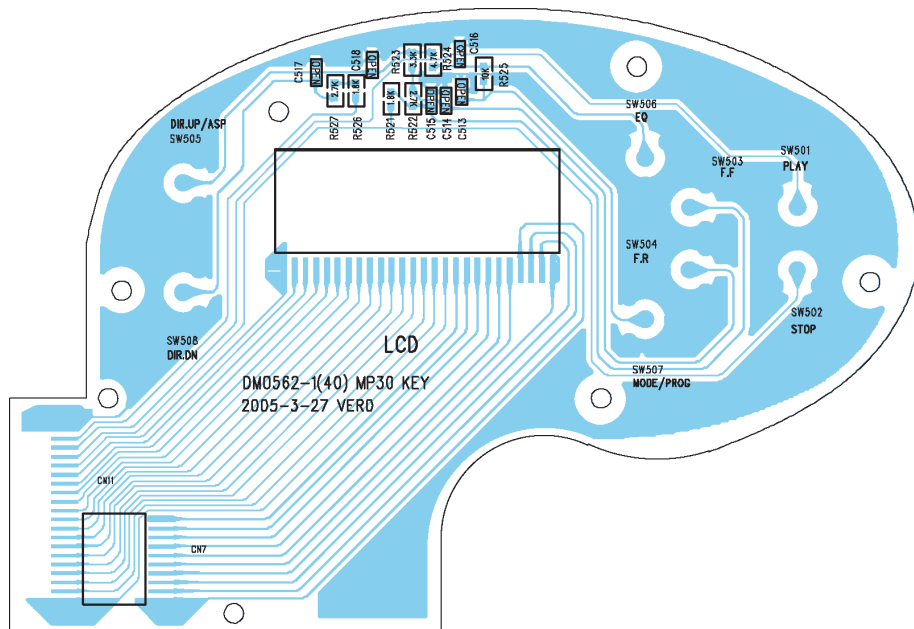
<http://www.grundig.com>

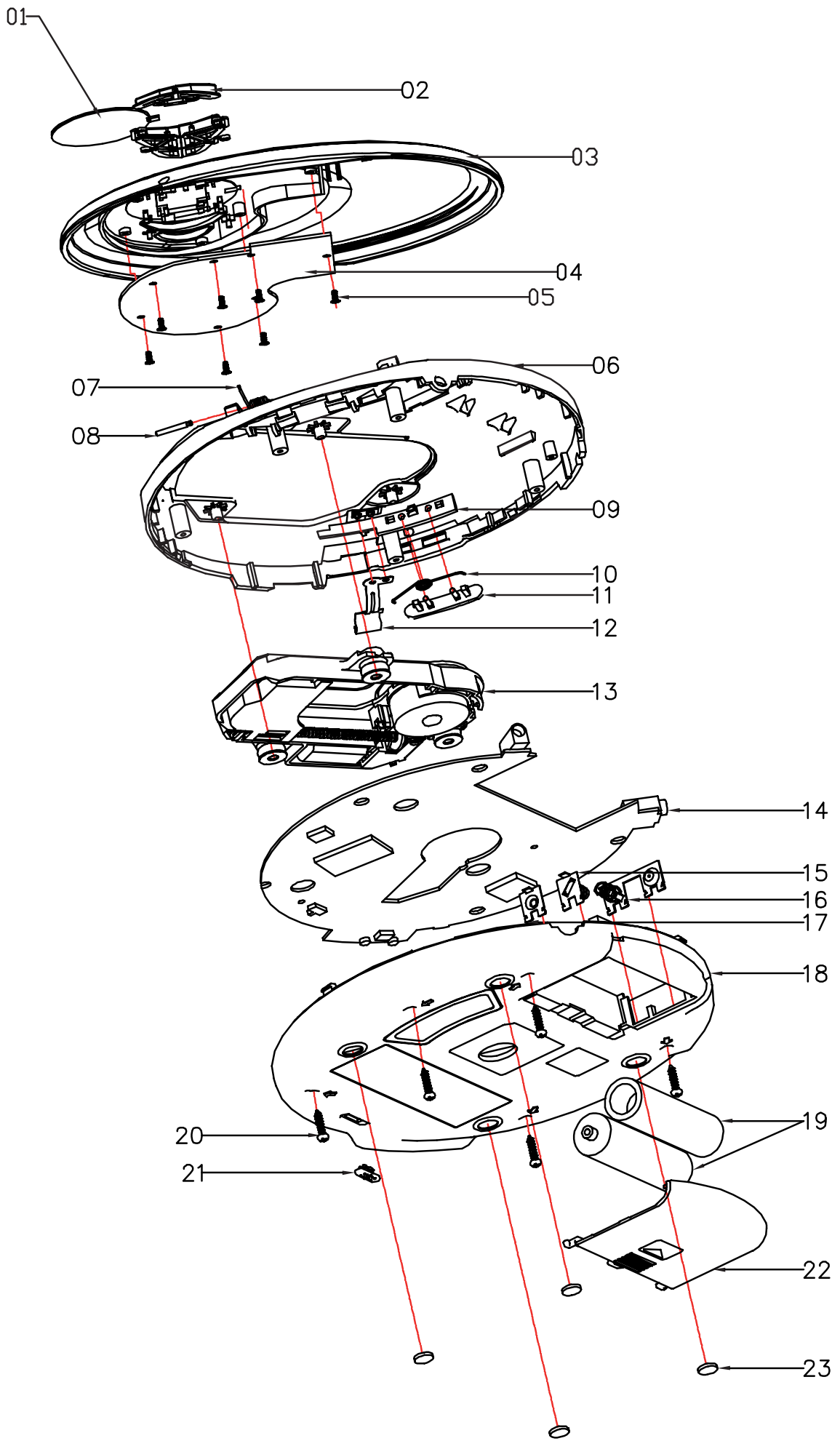
Function				DRAW		
TAP	FUNCTION	GND	OPEN	TAP		
5H	CDW	DA23Z/M97	K6m900	501	502	503
530	SERVO GAIN	+3.0k	0k	GND	GND	16M_5D
509	SEARCH	-12.4k	MUTE	GND	GND	OPEN 64M_5D
508	LCD	9DIGITS	3DIGITS	GND	OPEN	GND 16M_5D
506	SLED	INTERMIT.	NORMAL	GND	OPEN	OPEN 4M_DEO



Jul 28 2005










## Ersatzteilliste Spare Parts List

## AUDIO

### 5 / 2005

### CDP 5100 SPCD

BESTELL-NR. / ORDER NO.: GDR1000 CHROME/ORANGE

POS. NR. POS. NO.	ABB. FIG.	MATERIAL-NR. PART NUMBER	ANZ. QTY.	BEZEICHNUNG 	DESCRIPTION 
		GDR1000		CDP 5100 SPCD CHROME/ORANGE <b>TAUSCHGERAET</b>	CDP 5100 SPCD CHROME/ORANGE <b>EXCHANGE SET</b>
0001.000		759551223600		OHRHOERER SF-821	EARPHONE SF-821
0002.000		759551223800		BATTERIEFACHDECKEL	BATTERY DOOR
0003.000		759551223700		NETZADAPTER 600 MA	POWER ADAPTOR 600MA
		720114057500		BEDIENUNGSANLEITUNG D/GB/F/I/P/E	INSTRUCTION MANUAL D/GB/F/I/P/E
		720114057600		BEDIENUNGSANLEITUNG NL/PL/DK/S/FIN/TR	INSTRUCTION MANUAL NL/PL/DK/S/FIN/TR

Es gelten die Vorschriften und Sicherheitshinweise gemäß dem Service Manual "Sicherheit", Mat.-Nummer 720108000001, sowie zusätzlich die eventuell abweichenden, landesspezifischen Vorschriften!



The regulations and safety instructions shall be valid as provided by the "Safety" Service Manual, part number 720108000001, as well as the respective national deviations.

ÄNDERUNGEN VORBEHALTEN / SUBJECT TO ALTERATION